

# PR BX

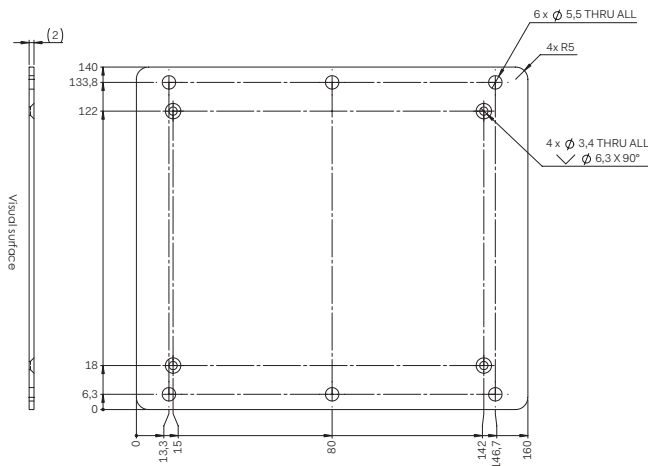
POWERBOX **Railway Line**  
ENAR150D Series  
Accessories

### ACCM1101A Wall Mounting Kit

For fixed mounting of an ENAR150D converter on a wall or on the wall of a metal box. Be sure that the surface the plate is mounted to can absorb heat as the surface facing the wall /box dissipate most of the heat from the converter.

#### Kit Content

1 pc aluminium mounting plate (PBSE1322058) 160x140mm, 2mm thick  
4 pc M4 screw

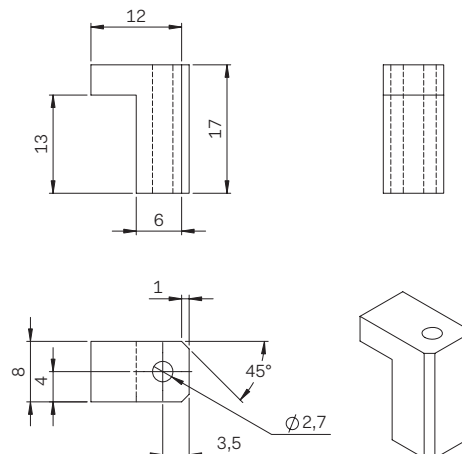


### ACCM1102A Connector Locking Block Kit

Connector blocks used to fix the connector by the ENAR150D, securing the connector for any mechanical stress.

#### Kit Content

2 pc Connector locking block (PBSE1322057)  
2 pcs screw (type).

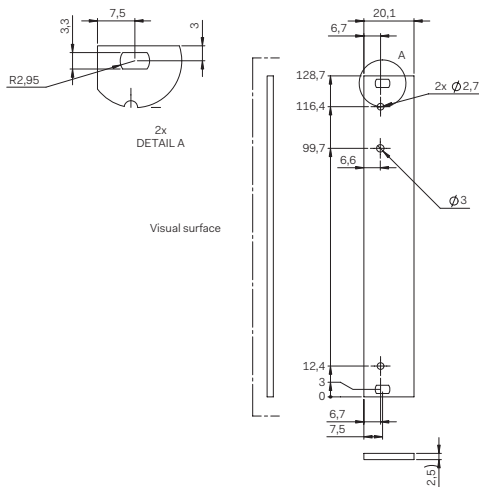


**ACCM1103A Front Plate Kit**

Front plate kit for mounting ENAR150D in DIN 41612 compatible euro card racks.

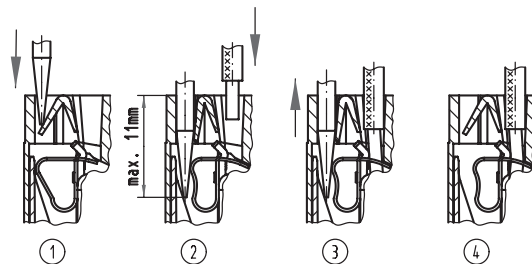
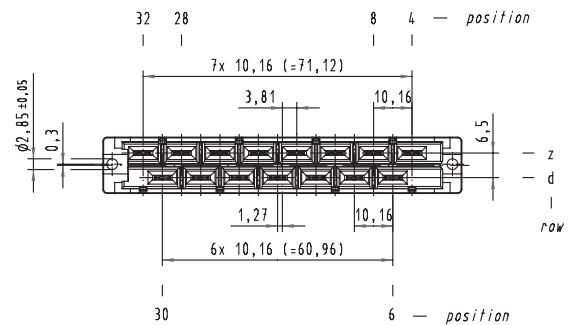
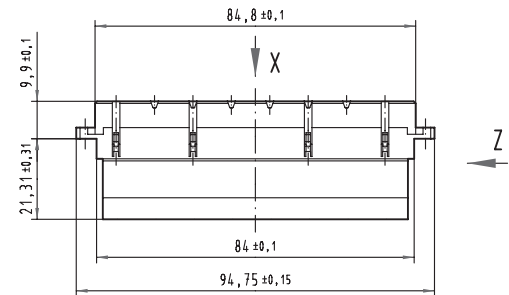
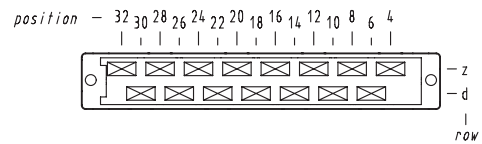
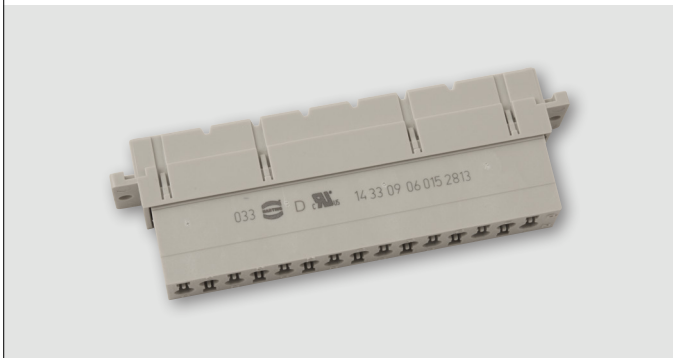
**Kit Content**

- 1 pc front plate
- 1 pc handle
- 1 pc screw M2,5 x 8 mm,
- 1 pc screw M2,5 x 16 mm
- 2 pcs collar screw
- 2 pcs sleeve
- 1 pc cover aluminum plate (for front handle)



**ACCX2001A Connector**

1 pc 15 pol connector for DIN41612, female with case clamp.  
 (Equivalent to Harting type 09060152813).



- Screw driver width: 2.5 x 0.4 mm
- Stripping length: 4 - 7 mm
- Wire gauge: 0.14 - 1.5 mm<sup>2</sup> (AWG 26 - 16)