



CFM300M SERIES

300 WATT AC-DC POWER SUPPLY WITH PFC



Features

- * Universal Input Range 90 ~ 264Vac
- * Active PFC Meets EN61000-3-2
- * High Efficiency up to 94%
- * High Power Density up to 14.1W/Inch³
- * Meets EN55011 Class B
- * Meets 2MOPP
- * Over Temperature Protection
- * Continuous Short Circuit Protection
- * Remote Voltage Sense
- * PS On/Off Remote Control
- * Power Good & Power Fail Signal
- * +5V Stand-by Output Power
- * 12V Fan Output
- * No Load Power Consumption < 0.3W_{NOTE6}
- * 3" x 5" Size



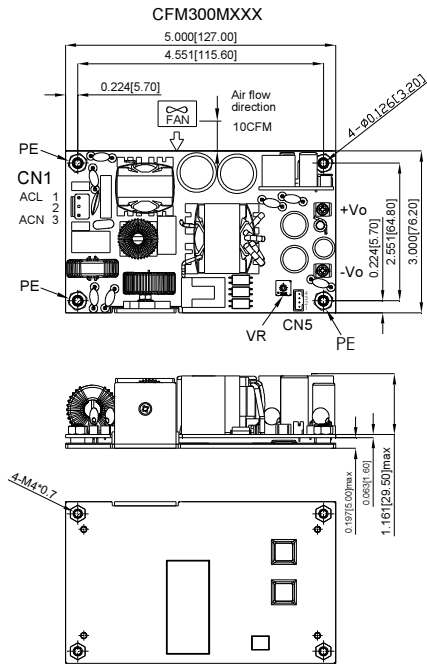
Model	Output Voltage	Output Current		Ripple & Noise NOTE 1	Voltage Accuracy NOTE 2	Line Regulation NOTE 3	Voltage ADJ. Range	Load Regulation NOTE 4	% EFF. Typ. NOTE 5
		Rated1	Rated2						
Main Output Voltage									
CFM300M120	+12 V	25A	16.67A	120mV	± 1%	± 0.5%	11.4~12.6	± 1%	92.5%
CFM300M240	+24 V	12.5A	8.34A	150mV	± 1%	± 0.5%	22.8~25.2	± 1%	93.5%
CFM300M360	+36 V	8.34A	5.56A	150mV	± 1%	± 0.5%	34.2~37.8	± 1%	93.5%
CFM300M480	+48 V	6.25A	4.17A	150mV	± 1%	± 0.5%	45.6~50.4	± 1%	94.0%
Stand-by Output Voltage									
All	+5V	1A	0.6A	100mV	± 3%	± 1%	--	± 5%	--
Fan Output Voltage									
All	+12V	0.5A		--	--	--	--	--	--

Note:
 Rated 1: Forced air convection
 Rated 2: Natural convection
 For covered versions add "C" to model number or order part no. For example CFM300M120C

Typical at 25°C, 230Vac and 60% rated load, unless otherwise Specified

Mechanical Specification

All Dimensions in Inches[mm]
 Tolerance Inches:x.xxx±0.02
 Millimeters:x.xx±0.5



CN1:
 PIN CONNECTION

Pin	Function
1	ACL
2	-
3	ACN

CN4:
 PIN CONNECTION

Pin	Function
1	FAN Output-
2	FAN Output+
3	GND
4	+5VSB
5	GND
6	PS-ON

CN5:
 PIN CONNECTION

Pin	Function
1	GND
2	PG
3	-Sense
4	+Sense

