

Part Number: BL0508-09-73

SUPER BRIGHT RED  
SUPER BRIGHT GREEN

### Features

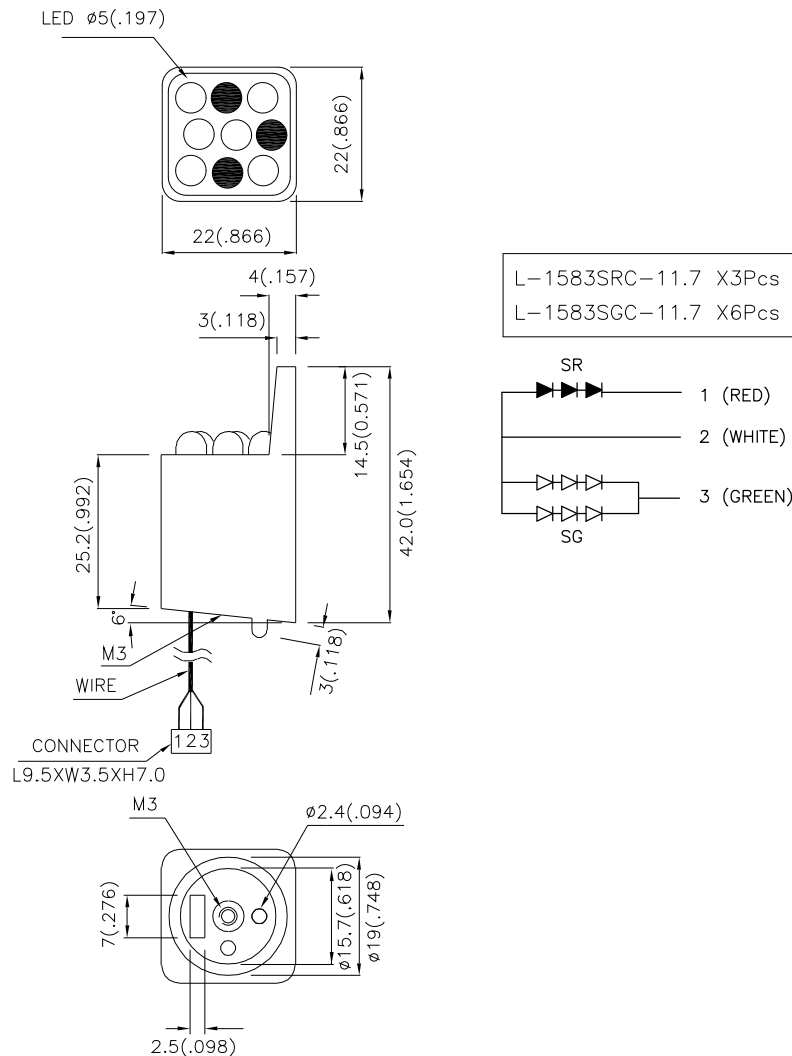
- HIGH VISIBILITY.
- EMITTING COLOR: SUPER BRIGHT RED AND SUPER BRIGHT GREEN.
- NO. OF BUILT-IN 5mm LED LAMPS: SUPER BRIGHT RED 3 PCS,SUPER BRIGHT GREEN 6 PCS.
- WATERPROOF PACKAGE WITH HOOD SUITABLE FOR OUTDOOR AND INDOOR INFORMATION BOARDS.
- RoHS COMPLIANT.

### Description

The Super Bright Red source color devices are made with Gallium Aluminum Arsenide Red Light Emitting Diode.

The Super Bright Green source color devices are made with Gallium Phosphide Green Light Emitting Diode.

### Package Dimensions



Notes:

1. All dimensions are in millimeters (inches).
2. Tolerance is  $\pm 0.25(0.01)$ " unless otherwise noted.
3. Specifications are subjected to change without notice.

## Electrical / Optical Characteristics at T<sub>A</sub>=25°C

Symbol	Parameter	Device	Wafer	Min.	Typ.	Max.	Units	Test Condi- tions
I <sub>v</sub>	Luminous Intensity	BL0508-09-73	SR	480	1200	-	mcd	I <sub>F</sub> =20mA
			SG	380	800	-		I <sub>F</sub> =40mA
2θ1/2	Viewing Angle		-	-	40	-	deg	-
V <sub>F</sub>	Forward Voltage		SR	-	5.6	7.5	V	I <sub>F</sub> =20mA
			SG	-	6.6	7.5		I <sub>F</sub> =40mA
λ <sub>P</sub>	Peak Wavelength		SR	-	660	-	nm	I <sub>F</sub> =20mA
			SG	-	565	-		I <sub>F</sub> =40mA
λ <sub>D</sub>	Dominant Wavelength		SR	-	640	-	nm	I <sub>F</sub> =20mA
			SG	-	568	-		I <sub>F</sub> =40mA
Δλ <sub>1/2</sub>	Spectral Line Half-width		SR	-	20	-	nm	I <sub>F</sub> =20mA
		SG	-	30	-	I <sub>F</sub> =40mA		
I <sub>R</sub>	Reverse Current	-	-	-	30	uA	V <sub>R</sub> = 5V	

## Absolute Maximum Ratings at T<sub>A</sub>=25°C

Parameter	Value		Units
	SR	SG	
Total Power dissipation	650		mW
DC Forward Current	30	25	mA
Reverse Voltage	5		V
Operating Temperature	-40 To +70		°C
Storage Temperature	-40 To +85		°C